



#### SAFETY PRECAUTIONS

- Before using this product, please read the instruction manual carefully to ensure the best possible performance.
- Do not use this product for any purpose other than keeping beverages (or food) hot or cold.
- Do not knock over, drop or expose this product to excessive shocks.
- Do not place this product on its side. (To avoid water leakage)



#### THE PEACOCK VACUUM BOTTLE CO.,LTD

Head Office:

5-12-20, Sagisu, Fukushima-ku,  
Osaka, 553-0002, Japan

Shanghai Office:

RM 803 No. 65 West Yan An Road  
Shanghai International Equatorial Hotel,  
Office Block, Shanghai, China

Japanese Website

<https://www.the-peacock.co.jp/>

English Website

<http://www.peacock-world.com/>

Peacock Rakuten online store

<https://www.rakuten.ne.jp/gold/the-charme/>



peacock\_official\_jp

peacock.overseas



@Peacock\_PR\_JPN

## CATALOG 2023

THE PEACOCK VACUUM BOTTLE CO.,LTD

A trusted worldwide specialized manufacturer  
of high-quality vacuum products since 1950.



Everyone has their own definition of happiness.  
And one of those is the love of “food” .  
Happiness and food are highly connected and it exists on every occasion.

## “BE INSPIRED BY FOOD”

This is Peacock’ s corporate philosophy as a brand.  
We aim to deliver this inspiration by producing innovative kitchen tools that will bring out  
the person’ s deep emotion in food.

We at The Peacock Vacuum Bottle Co., Ltd. will continue to create products that will enrich  
and make the “food environment” more fruitful which is important for people to live.

PEACOCK  
COMPANY HISTORY



GLASS POT



STAINLESS STEEL  
POT, OTHERS



STAINLESS STEEL  
TUMBLER



ICE PACK



HOME IZAKAYA  
SERIES



GAMING TUMBLER  
BOTTLE



STAINLESS STEEL  
BOTTLE



FOOD JAR  
LUNCH JAR



KEEPER



GLASS POT  
(MADE TO ORDER)





# Peacock Company History

## 1950~1969



Logo 1950~

- 1950 Our founder, Mr. Masahumi Yamanaka established "The Peacock Vacuum Bottle Co., Ltd." in Fukushima District, Osaka City, Osaka Prefecture.  
At that time, our business was focused on producing glass vacuum products and exporting them to countries in Southeast Asia.
- 1951 Increased the capital to 1 million Japanese Yen.
- 1953 Mr. Masahumi Yamanaka was appointed as the director of All Japan Vacuum Bottle Association.
- 1954 Started the domestic sales with the trademark of "Kujakuzirushi (Peacock)". Received the recommendation from the Governor of Osaka Prefecture to be selected as one of the Osaka Prefecture industrial products.
- 1955 Started the production of vacuum insulated ice cream container for a confectionary company.  
Launched the long-time best seller "Grand Pot" that was produced continuously until the 1980s.
- 1956 Started the sales of vacuum bottle for breastfeeding.
- 1957 Donated 30 pcs of vacuum bottles to the Japanese Antarctic Research Expedition.
- 1958 Mr. Masahumi Yamanaka was appointed as President and Representative Director of Peacock.  
Peacock partnered with local enterprises and set up "Bangkok Peacock" in Thailand. And started the production of wide mouth jar with a monthly capacity of over 20,000 pcs.



Early Peacock Vacuum Container



Vacuum Bottle in 1950s



Grand Pot



Logo 1960~

- 1960 Attended the Japan International Trade Fair.

- 1962 Launched "Spoon Pot", a best selling portable vacuum cooler for ice cream.

- 1963 September - increased the capital to 4 million Japanese Yen.  
November - increased the capital to 8 million Japanese Yen.

- 1964 May - increased the capital to 10 million Japanese Yen.  
June - received the "Export Contributing Company" award from the Minister of International Trade and Industry.



Logo 1965~

- 1966 May - increased the capital to 15 million Japanese Yen.  
November - received the "Excellent Factory for Manufacturing Export Products" awards from the Minister of International trade and Industry.
- 1967 Nagoya and Fukuoka sales office were established.  
June - received the "Export Contributing Company" award from the Minister of International Trade and Industry.
- 1968 Introduced the world's first rotary vacuum pot and patent it.  
It was said that the vacuum pot could be sold only if it has a rotary design after it was launched to the market.
- 1969 Peacock appointed Ms. Yoko Kon as the brand ambassador from 1968~1969.  
Main sponsor for TV program "Quiz Time Shock".



Portable Cooler in 1965



First Rotary Vacuum Pot

1950 Korean War broke out

1951 Signed the Treaty of Peace  
Signed the Japan-US Security Treaty

1953 TV broadcasting started

1956 Japan joins the United Nations

1957 Japan's first Antarctic research

1958 Tokyo Tower completion

1960 Signed the Japan-US New Security Treaty  
Started broadcasting color TV programs  
Vietnam War broke out

1961 Leisure boom

1964 Started the operation of Tokaido Shinkansen

Tokyo hosted the Olympics

1968 Started the operation of Tomei Expressway

1969 Moon landing of Apollo 11

# Peacock Company History

## 1970~1989

- 1970 Mr. Masahumi Yamanaka delivered the thermos industry revision suggestion reports to Japanese Industrial Standards Committee.

- 1972 April - Osaka sales office was established.



Logo 1974~

- 1974 Mr. Masafumi Yamanaka was awarded the "Blue Ribbon Medal".  
Lever type Air Pot AR model released.

- 1975 Completion of new office building.  
Completion of 1st production line. Daily assembly capacity: 4,000 pcs. for Air Pot / 3,500 pcs. for Keeper  
Push type Air Pot PA model released.  
Hiroshima branch office was established.

- 1976 May - increased the capital to 30 million Japanese Yen.

- 1977 Introduced more colorful choices for air pots, handy pots and vacuum bottles.



Logo 1978~

- 1978 Cool box IC model released.  
Kanazawa branch office was established.  
The preferences for the patterns on the products have moved from flower patern to "psychedelic" design.
- 1979 Mr. Masahumi Yamanaka was awarded with the Fifth Class of the Order of the Rising Sun, Gold and Silver Rays.



Logo 1980~Now

- 1980 Mr. Masahumi Yamanaka was appointed as the chairman of the All Japan Vacuum Bottle Association.  
July - started to sell vacuum pot with tea ware such as Arita ware and Mino ware as a gift set.  
Celebrated 30th anniversary foundation.

- 1981 Set up Peacock Co., Ltd. - a trading company where export business was transferred.

- Peacock Sales Co., Ltd. was established to enhance the domestic sales.  
July - PF model air pot was introduced to the market to meet the needs of new customers.

- November - participated in the Pacific International Trade Fair.

- 1982 July - added new air pots and gift sets to expand the product line.

- November - participated in Baghdad International Trade Fair.

- Introduced the stylish Herby Pot HPL-500 model.

- March - participated in Cologne International Trade Fair.

- 1984 Launched the first stainless steel vacuum bottle AXS model.  
Dismantled the Peacock Sales Co., Ltd. and absorbed it into the head office.

- 1985 Mr. Shigehiro Yamanaka was appointed the president of Peacock and Mr. Masafumi Yamanaka was appointed an advisor of Peacock.

- 1986 Launched the first color stainless vacuum bottles AXC model in vacuum bottle industry.  
Launched the first stainless steel luch Jar AXL-17 to the market.

- Sendai and Takamatsu branch offices were established.

- 1987 In August, introduced the first electric pot WAP-2200 model.

- Set up Sizuoka and Shikoku branch offices.

- 1988 January - introduced the slim and stylish model HRP-750 "Harley" Pot.

- 1989 May - Sapporo branch office was established.  
Received the Good Design Award for Mini Hot Plate TU-70 model.



Lever type Air Pot AR model



Push type Air Pot PA model



Cooler Box IC model



Stainless Steel Vacuum Bottle AXS model



Stainless Steel Vacuum Bottle AXC model



First Electric Pot WAP model

1970 Japan World Expo

1972 Sapporo Winter Olympic Games  
Okinawa returned to Japan

1973 First oil shock

1975 Okinawa Ocean Expo

1976 Lockheed scandal

1978 Signed the Japan-China Peace and Friendship Treaty  
Second oil shock

1980 Japan boycotts participation in Moscow Olympics

1982 Started the operation of Tohoku and Joetsu Shinkansen

1983 Tokyo Disneyland opening

1984 Summer Olympics in Los Angeles

1984 Tsukuba Expo held

1987 JNR division and privatization

1988 Summer Olympics in Seoul

1989 Showa era ended and Heisei era began.

# Peacock Company History 1990~2009

- 1990 February, completion of new factory and new warehouse. Introduced the electric rice cooker JTA-54 model for singles.

- 1991 JTA-54 electric rice cooker received the Good Design Award. Electric pot became one of our major product line. 1 million units were sold after its first release in 4 years.



Electric Rice Cooker  
JTA-54 model

- 1992 Aimed at expanding rice cookers and family leisure related products.

- 1993 November - received a recognition from the tax office chief as one of the Excellent Companies of Fukushima Ward, Osaka City.

- 1994 May - Mr. Shigehiro Yamanaka was appointed as the director of All Japan Vacuum Bottle Association.



Stainless Steel Keeper  
IDS model

- 1996 Stainless steel keeper IDS-120S/150S received the Good Design Award. North Kantou sales office was established. Launched the first "One button type" electric pump dispenser WMA model to the market.

- 1997 Launched AXT model, the first large capacity stainless steel vacuum bottle.



Electric Water Dispenser  
WMA model

- 1998 November - received a recognition from the tax office chief as one of the Excellent Companies of Fukushima Ward, Osaka City.

- 2001 Started the production of stainless steel vacuum bottle in China factory. Launched MHS model, Peacock's first stainless steel vacuum air pot.



Stainless Steel Vacuum Bottle  
ADA model

- 2002 Suminoe factory in Osaka city was established. December 12th - Peacock founder, Mr. Masahumi Yamanaka, passed away.

- 2003 Launched ADA/ADB series, Peacock's first "cold beverages only" stainless steel bottle. ADA model received Good Design Award.

March - launched AHG model, a bright finished stainless steel handy pot.



Grace Mug series  
AMB model

- 2005 Launched ADT model, a big capacity "cold beverage only" stainless steel bottle.

- 2006 March - launched ADR-F50S/F100S, Peacock's first one touch "cold beverages only" stainless steel bottle.

- 2007 Mr. Yoshihiro Yamanaka was appointed as the president and Mr. Shigehiro Yamanaka was appointed as the Chairman of Peacock.

Started the sales of stainless steel vacuum bottle AMB model.



Grace Mug series  
AMC model

- 2009 AMC model, a stainless steel vacuum bottle, received the Good Design Award.

1990 Implementation of 3% Consumption tax

1991 Gulf War broke out  
Collapse of Soviet Union

1992 Asset bubble burst

1993 J-League launched

1994 Kansai International airport opened

1995 Great Hanshin-Awaji Earthquake  
Tokyo Subway sarin attack

1997 Implementation of 5% Consumption tax

1998 Nagano Winter Olympics

2001 USJ Opening  
911 terror attack

2002 Held Japan-Korea Soccer World Cup

2004 Athens Summer Olympics  
Niigata Chuetsu Earthquake

2006 Turin Olympics

2008 Lehman shock  
Beijing Olympics

# Peacock Company History 2010 and Beyond

- 2010 Peacock's 60th anniversary celebration. Launched WAK model, Peacock's first separate electric kettle.



Electric Kettle WAK model

- 2011 Transferred the domestic production plant to Osaka Suminoe factory to rebuild the head office building.

- 2012 Set up the Peacock Trading (Shanghai) Co., Ltd in Shanghai, China to enhance the sales of Asian market.

- 2013 February - completion of head office building. Launched AMJ model, a stainless steel bottle designed for sports drinks.



Lip Mug AAT-L model

- 2015 Ms. Chika Yamanaka was appointed as the President of Peacock. Lip Mug AAT-L35 model received the Good Design Award.

- 2017 Launched AMZ-40 model, a mug bottle targeting younger generations. Launched AKB-20 model, a mini bottle that fits easily in women's bags.



Stainless Steel Vacuum Bottle AMZ-40 model

- 2019 March 7th, Mr. Shigehiro Yamanaka, chairman of Peacock, passed away. Started the new products development based on the new corporate philosophy "Be inspired by food". Launched the living jar for microwave oven under the new brand "ilma".



ilma Living Jar

- 2020 Peacock's 70th anniversary celebration.

- 2021 Launched AKS-R model, a tumbler bottle targeting coffee lovers. Applied the vacuum insulation technology on the Ice Bag to combat heat stroke.

Launched the "Home Izakaya Series".

- 2022 Home Izakaya series received the Good Design Award.



Home Izakaya Series

Introduced AKY-F40 Porta-bottle at Tokyo Girl's Collection 2022. Peacock became the 1st Sustainability Partner for this event.



Porta-Bottle

2010 Tohoku Shinkansen started

2011 Great East Japan Earthquake

2012 Tokyo Sky Tree Opened

2014 Implementation of 8% Consumption tax

2015 Hokuriku Shinkansen started

2016 Rio Olympics  
Kumamoto earthquake

2019 Implementation of 10% Consumption tax

Heisei era ended and Reiwa era began

2021 Tokyo Olympics 2020



HANDY POT

GLASS LINED THERMAL CARAFE WITH EXCELLENT TEMPERATURE RETENTION.  
STAIN AND ODOR RESISTANT.

NEW



**GHD-100**  
1.0L HOT COLD  
MADE IN JAPAN  
□ (FLC) Country Flower 4971860034992  
■ (ZA) Urban 4971860035005



**SJP-190★**  
1.9L HOT COLD  
360° SWIVEL  
MADE IN JAPAN  
□ (FT) Tulip 4971860030833  
★ Limited stock.



360° SWIVEL  
With rotary plate, it is easy to dispense water from any direction.

GLASS AIR POT

DISPENSER WITH SMOOTH PUMP ACTION AND EASY TO DISPENSE MECHANISM.

NEW



**MPP-22**  
2.2L HOT COLD  
360° SWIVEL  
NO INNER PLUG  
MADE IN JAPAN  
□ (FLC) Country Flower 4971860034954  
■ (ZA) Urban 4971860034961



**MPP-30**  
3.0L HOT COLD  
360° SWIVEL  
NO INNER PLUG  
MADE IN JAPAN  
□ (FLC) Country Flower 4971860034978  
■ (ZA) Urban 4971860034985



Easy to clean with detachable lid.




360° SWIVEL  
Convenient to dispense water from any directions!




Open the lid and pour the hot water in the pot.

LEVER TYPE AIR POT.

NEW



**MRP-16**  
1.55L HOT COLD  
360° SWIVEL  
MADE IN JAPAN  
□ (FLC) Country Flower 4971860035012



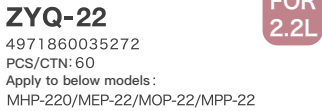
Easy to dispense water with lever type air pot.



360° SWIVEL  
Convenient to dispense water from any directions!



**DISPENSING PIPE** Replacement parts—dispensing pipe used for Peacock air pot.



**ZYQ-22**  
4971860035272  
PCS/CTN: 60  
Apply to below models:  
MHP-220/MEP-22/MOP-22/MPP-22



**ZYQ-30**  
4971860035289  
PCS/CTN: 60  
Apply to below models:  
MPP-30



**ZYP-30**  
4971860020025  
PCS/CTN: 60  
Apply to below models:  
MHP-300/MEP-30/MOP-30

Product	Handy Pot		Air Pot		
Model No.	GHD-100	SJP-190	MPP-22	MPP-30	MRP-16
Capacity (L)	1.0	1.9	2.2	3.0	1.55
Hot Retention (10 hrs)	68°C/154°F	76°C/169°F	76°C/169°F	78°C/172°F	73°C/163°F
Cold Retention (10 hrs)	8°C/46°F	7°C/44°F	7°C/44°F	7°C/44°F	8°C/46°F
Product Size/ W x D x H (cm)	12.9×17.9×26.3	14.7×18.9×31.9	19.6×24.8×31.2	19.6×24.8×37.2	16.6×21.5×34.2
Product W.t. (kg)	0.73	1.05	1.62	1.86	1.45
Case Size/ W x D x H (cm)	15.8×12.8×27.0	16.5×15.2×33.0	20.6×20.0×31.9	20.6×20.0×38.6	21.8×17.2×35.5
Case W.t. (kg)	0.86	1.35	1.85	2.11	1.7
PCS / CTN	12	12	6	6	6

HANDY POT★

DESIGNED FOR RESTAURANT OR COFFEE SHOP.



**SJP-A100**  
■ (B) Black 4971860030840  
1.0L HOT COLD  
MADE IN JAPAN



**SJP-A190**  
■ (B) Black 4971860030857  
1.9L HOT COLD  
MADE IN JAPAN  
360° SWIVEL

GLASS AIR POT★

SUPREME RETENTION CAPABILITY-  
GREAT FOR HOLDING COFFEE HOT FOR A LONG PERIOD OF TIME.



**MOP-A22**  
■ (B) Black 4971860030772  
2.2L HOT COLD  
MADE IN JAPAN  
360° SWIVEL  
NO INNER PLUG



**MOP-A30**  
■ (B) Black 4971860030789  
3.0L HOT COLD  
MADE IN JAPAN  
360° SWIVEL  
NO INNER PLUG

SV mark is a quality standard defined by the Japan National Vacuum Flask Industry Association.

★ Limited stock.

ICE PAIL



**IBS-A160**  
■ (B) Black 4971860412011  
1.6L MADE IN JAPAN  
● With ice tong

Product	Handy Pot		Air Pot		Ice Pail
Model No.	SJP-A100	SJP-A190	MOP-A22	MOP-A30	IBS-A160
Capacity (L)	1.0	1.9	2.2	3.0	1.6
Hot Retention (10 hrs)	68°C/154°F	76°C/169°F	76°C/169°F	78°C/172°F	—
Cold Retention (10 hrs)	8°C/46°F	7°C/44°F	7°C/44°F	7°C/44°F	—
Product Size/ W x D x H (cm)	12.9×17.9×26.2	14.7×18.9×31.9	19.6×24.8×31.2	19.6×24.8×36.6	16.0×14.7×16.6
Product W.t. (kg)	0.81	1.05	1.62	1.85	0.46
Case Size/ W x D x H (cm)	16.2×13.4×26.8	16.5×15.2×33.0	20.6×20.0×31.9	20.6×20.0×37.4	16.5×16.5×19.0
Case W.t. (kg)	0.93	1.35	1.85	2.1	0.69
PCS / CTN	12	12	6	6	24



LIVING POT

MODERN INSULATED AND SPACE-SAVING HANDY POT.  
PERFECT FOR YOUR LIVING AND WORKSPACE.



**AHW-100**  
1.0L HOT COLD WHOLE WASHABLE

■ (R) Red 4971860034213  
□ (W) White 4971860035302  
■ (TD) Dark Brown 4971860034206



Easy to clean with simple design.  
Turn the rib toward the mouth when pouring water.  
Easy to clean with 7.6cm wide mouth design.

Product	Living Pot	Stainless Steel Handy Pot				Air Pot	
Model No.	AHW-100	AHR-100	AHR-150	AHR-200	MPS-25	MPS-30	
Capacity (L)	1.0	1.0	1.5	2.0	2.5	3.0	
Hot Retention (10 hrs)	64°C/147°F	67°C/152°F	71°C/159°F	76°C/168°F	70°C/158°F	74°C/165°F	
Cold Retention (10 hrs)	10°C/50°F	10°C/50°F	9°C/48°F	8°C/46°F	9°C/48°F	9°C/48°F	
Mouth Diameter (cm)	7.6	5.0	5.0	5.0	6.9	6.9	
Product Size/ W x D x H (cm)	9.8×14.8×23.4	12.7×16.3×19.4	12.7×16.3×24.4	12.7×16.3×28.7	18.5×23.3×27.8	18.5×23.3×30.4	
Product W.t. (kg)	0.74	0.63	0.73	0.82	1.5	1.6	
Case Size/ W x D x H (cm)	13.5×10.5×24.1	15.0×13.2×20.4	15.0×13.2×25.4	15.0×13.2×29.4	19.7×18.9×28.5	19.7×18.9×31.1	
Case W.t. (kg)	0.83	0.75	0.87	0.98	1.8	1.9	
PCS / CTN	12	12	12	12	6	6	

STAINLESS STEEL HANDY POT

GRAB-AND-GO DESIGN, ONE-HANDED EASY-TO-POUR VACUUM POT.



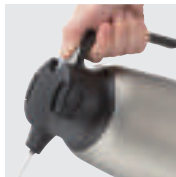
**AHR-100**  
1.0L HOT COLD  
■ (XA) Stainless 4971860031274  
■ (R) Red 4971860031281



**AHR-150**  
1.5L HOT COLD  
■ (XA) Stainless 4971860031298  
■ (R) Red 4971860031304



**AHR-200**  
2.0L HOT COLD  
■ (XA) Stainless 4971860031830



Press the lever and tilt the handy pot when dispensing water.



Pinch the stopper release and pull the stopper set out.

STAINLESS STEEL AIR POT

EASY TO CLEAN WITH WIDE MOUTH DESIGN.  
ENERGY-SAVING VACUUM BEVERAGE DISPENSER  
WITH SIMPLE DISPENSE MECHANISM.



**MPS-25**  
2.5L HOT COLD  
360° SWIVEL NO INNER PLUG  
■ (XA) Stainless 4971860031199



**MPS-30**  
3.0L HOT COLD  
360° SWIVEL NO INNER PLUG  
■ (XA) Stainless 4971860031212



Easy to clean with detachable lid.



No inner plug design. Easy to dispense beverage.



It is convenient to dispense water from any directions!



Press the push button to dispense water.

ICE PAIL

CONVENIENT AND HANDY. STORE ICE CUBES FOR PARTIES, PICNICS AND EVENTS.



**IBS-1500**  
1.6L MADE IN JAPAN  
■ (ZE) Excellent 4971860411212  
● With ice tong.  
※ Non Vacuum Insulated products.

ICE BUCKET

SIMPLE YET STYLISH LARGE CAPACITY BUCKET. KEEPS ICE CUBES AND YOUR FAVORITE DRINKS COLD FOR LONG!



**IBT-280**  
2.75L COLD ONLY WHOLE WASHABLE  
■ (XA) Stainless 4971860033353  
● With ice tong.



Product	Ice Pail	Ice Bucket
Model No.	IBS-1500	IBT-280
Capacity (L)	1.6	2.75
Product Size/ W x D x H (cm)	16.0×14.7×16.6	19.5×19.5×14.3
Product W.t. (kg)	0.46 ※	0.68 ※
Case Size/ W x D x H (cm)	16.5×16.5×19.0	20.2×20.0×15.0
Case W.t. (kg)	0.69	0.88
PCS / CTN	24	6

※Without ice tong.





STAINLESS STEEL MUG

SIMPLE AND COMFORTABLE COFFEE MUG FOR HOME & OUTDOORS.

NEW



ANA-28 0.28L

- (H) Grey 4971860035821
- (W) White 4971860035807
- (Y) Yellow 4971860035791
- (AD) Dark Blue 4971860035814

HOT COLD WHOLE WASHABLE



Hotter for longer. Double wall insulation keeps your delicious coffee or tea hot and your hands sweat free.



Easy to read measurement indicators suitable for pouring instant coffee and soup packets.



Lid has a corner notch that holds the spoon in place and prevents dust from entering.

TUMBLER WITH STRAW

YOUR WORK PRODUCTIVITY COMPANION FOR YOUR WORK SPACE.



Easy to drink with silicone straw

Bottom silicone cover prevents scratches on the bottle.



Lid prevents spilling in case of accidental knocks and bumps.



Remove the lid and sip from your hot drink.

ATG-45 0.45L

- (CAS) Pearl Beige 4971860035098
- (HCH) Charcoal Grey 4971860035081

Product	Mug	Straw Tumbler
Model No.	ANA-28	ATG-45
Capacity (L)	0.28	0.45
Hot Retention (1 hr)	63°C/145°F	—
Cold Retention (1 hr)	8°C/46°F	7°C/44°F
Mouth Diameter (cm)	8.3	7.7
Product Size/ W x D x H (cm)	11.8×9.2×7.2	8.8×8.3×14.8 8.8×8.3×23.7 (With straw)
Product W.t. (kg)	0.18	0.23
Case Size/ W x D x H (cm)	11.1×9.8×8.4	9.3×9.3×16.0
Case W.t. (kg)	0.22	0.29
PCS / CTN	12	12

Product	Ice Pack	Mini Ice Pack
Model No.	ABA-51	ABB-15
Product Size/ W x D x H (cm)	7.9×7.5×16.9	5.8×5.8×17.0
Product W.t. (kg)	0.29	0.2
Case Size/ W x D x H (cm)	7.7×7.7×18.0	6.5×6.5×18.2 ※
Case W.t. (kg)	0.35	0.25
PCS / CTN	12	12

ICE PACK

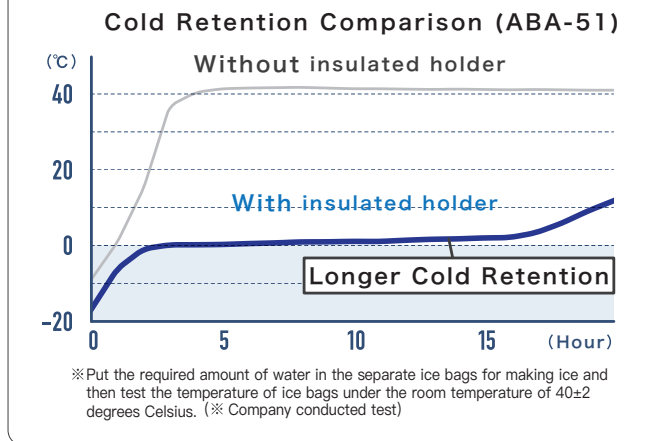
RESUABLE VACUUM INSULATED COOLING SOLUTION FOR EVERYDAY USE.

NEW



ABA-51

- (WH) Ash White 4971860035258
- (GBL) Blue Green 4971860035241



COOLING SOLUTION FOR DIFFERENT OCCASIONS.

01



Cold Compress

02



Cooling down body temperature

03



Prevent heat stroke

04



Fever Relief



Insulated Holder

Double wall vacuum insulated, keeps ice pack cold longer!

Ice Pack

Product Contents



ICE PACK



ICE MAKING CASE



INSULATED HOLDER



USE AS A BEER HOLDER

- Put the ice pack in the cold keeping holder for longer retention when not in use.
- With the ice making casing, simply put water in the ice bag and leave it in the freezer.
- It can also be used as a beer holder to keep your beer cold longer!

MINI ICE PACK (PORTABLE TYPE)

SMART AND PORTABLE ICE PACK FOR INSTANT RELIEF.

NEW



ABB-15

- (WH) Ash White 4971860035142
- (A) Pale Blue 4971860035159

Product Contents



SILICONE ICE PACK



INSULATED HOLDER



Made of soft silicone ice pack.



Cools down body temperature





HOME IZAKAYA SERIES



BEER TUMBLER

SOPHISTICATED YET COMFORTABLY DESIGNED TUMBLER.  
ENHANCE THE TRUE TASTE OF YOUR DRINKS.

NEW



ATD-42

0.42L HOT COLD WHOLE WASHABLE

■ (B) Black 4971860034671  
■ (XA) Stainless 4971860034664



Enjoy a smooth drink with the 1mm ultra-thin tumbler edge.



Perfect capacity for a can of beer.



Good cold retention capability. Great for sour cocktail, whisky or soda.

SHOCHU TUMBLER

2 IN 1 MULTIFUNCTIONAL TUMBLER.  
POUR, HEAT AND SERVE HOT LIQUOR FOR LONGER.

NEW



ATE-30

0.27L HOT COLD WHOLE WASHABLE

■ (B) Black 4971860034688



Double material: Inner ceramic cup and outer stainless steel cup.



Heat your beverage with the microwave oven.



Perfect for shochu with hot water or hot wine.

※ Do not put the stainless steel cup in the microwave oven.

HOME IZAKAYA SERIES

JAPANESE SAKE BOTTLE SET

KEEP THE DESIRED TEMPERATURE AND  
ENJOY THE VISUAL OF YOUR HOT OR  
COLD JAPANESE SAKE.

NEW



ACF-38

0.3L HOT COLD WHOLE WASHABLE

■ (XA) Stainless 4971860034701



Double-walled vacuum construction. Sake stays hot on the inside without heating up the exterior of the bottle.



Enjoy the beautiful reflection of the sake from the mirror-finished cup.



Dishwasher safe and is easy to clean.

※ Sake bottle is vacuum insulated. Cup is non-vacuum insulated.

MINI ICE PAIL

WELL-INSULATED CLASSY ICE PAIL  
FOR A RELAXING DRINKING TIME AT HOME.

NEW



IBC-55

0.55L HOT COLD WHOLE WASHABLE

■ (XA) Stainless 4971860034695  
● With ice tongs



Double-walled vacuum insulation. Keeps ice cold with no condensation.



Unique wooden lid can be used as a tray for nibbles like nuts or cheese.

NEW



ACD-18

1.75L HOT COLD WHOLE WASHABLE

■ (B) Black 4971860034732



Lightweight design. Suitable for home party or camp activities.



10.5cm wide mouth design. Perfect for chilling beer, wine or champagne.

Product	Beer Tumbler	Shochu Tumbler	SAKE BOTTLE SET
Model No.	ATD-42	ATE-30	ACF-38
Capacity (L)	0.42	0.27	Bottle/0.3 Cup/0.08
Hot Retention (1 hr)	48°C/118°F	—	Bottle/63°C/145°F
Cold Retention (1 hr)	8°C/46°F	—	Bottle/7°C/44°F
Mouth Diameter (cm)	7.5	8.0	Bottle/3.4 Cup/5.5
Product Size/ W x D x H (cm)	7.7×7.7×16.1	8.8×8.8×9.9	Bottle/6.8×6.8×16.1 Cup/ 5.9×5.9×5.3
Product W.t. (kg)	0.23	0.32	Bottle/0.19 Cup/0.04
Case Size/ W x D x H (cm)	8.2×8.2×17.0	9.2×9.2×10.6	7.3×7.3×22.4
Case W.t. (kg)	0.28	0.36	0.33
PCS / CTN	12	12	12

Product	Mini Ice Pail	Wine Cooler
Model No.	IBC-55	ACD-18
Capacity (L)	0.55	1.75
Mouth Diameter (cm)	9.7	10.5
Product Size/ W x D x H (cm)	10.8×10.8×10.5	11.1×11.1×21.8
Product W.t. (kg)	0.3 ※	0.5
Case Size/ W x D x H (cm)	11.3×11.3×13.6	11.9×11.9×22.8
Case W.t. (kg)	0.39	0.6
PCS / CTN	12	12

※ Without ice tongs.

PEACOCK COMPANY HISTORY

GLASS POT

STAINLESS STEEL POT, OTHERS

STAINLESS STEEL MUG, TUMBLER

ICE PACK

HOME IZAKAYA SERIES

GAMING TUMBLER BOTTLE

STAINLESS STEEL BOTTLE

FOOD JAR LUNCH JAR

KEEPER

GLASS POT (MADE TO ORDER)





GAMING TUMBLER

STRAW TUMBLER WITH EXCELLENT STABILITY.  
BOOST YOUR GAMING FOCUS AND LEAD IT TO VICTORY.

NEW

SUS 316



ATX-R55

0.55L HOT COLD WHOLE WASHABLE

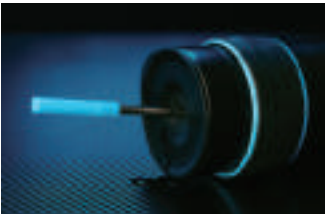
- (AB) BLUE BLACK 4971860034930
- (GB) GREEN BLACK 4971860034947
- (RB) RED BLACK 4971860034923



Straw straight type helps you sip it your way smoothly even with a headset, so you stay focused on the screen.



Easy-to-grip feature made of elastomer resin and truncated cone shaped bottom cover for firm stability.



Unique lid prevents unwanted spills when you accidentally knock it down.



Double-layered vacuum insulation structure keeps the drink warm on the inside without getting the tumbler hot on the outside.  
\* Use the straw for storing cold drinks only.

GAMING BOTTLE

PORTABLE GAMING BOTTLE WITH LEAK PREVENTIVE WATERTIGHT STRUCTURE.  
RECHARGE AT HIGH SPEED AND DELIVER YOUR BEST PERFORMANCE.

NEW

SUS 316



AKX-R65

0.65L HOT COLD WHOLE WASHABLE

- (AB) BLUE BLACK 4971860034909
- (GB) GREEN BLACK 4971860034916
- (RB) RED BLACK 4971860034893



Built-in straw lid for convenient one-handed drinking. Sip comfortably with the silicone straw that is gentle on the lips.



Ergonomically designed silicone grip, easy to hold with your fingers and palm.



Comes with a handle for easy carrying. Lightweight compared with the previous model.



Watertight structure ensures that the drink inside will not spill out. Great for e-gaming events and tournaments.

Product	Gaming Tumbler	Gaming Bottle
Model No.	ATX-R55	AKX-R65
Capacity (L)	0.55	0.65
Cold Retention (6 hrs)	—	9°C/48°F
Cold Retention (1 hr)	7°C/44°F	—
Mouth Diameter (cm)	7.7	4.8
Product Size/ W x D x H (cm)	9.1×9.0×16.4 9.1×9.0×25.8(with straw)	7.8×9.7×27.8
Product W.t. (kg)	0.31	0.34
Case Size/ W x D x H (cm)	9.6×9.6×17.5	8.9×8.9×29.0
Case W.t. (kg)	0.38	0.43
PCS / CTN	12	12



STAINLESS STEEL TUMBLER



TUMBLER BOTTLE

STYLISH TUMBLER THAT CARRIES THE FRESH TASTE, AROMA, AND KEEPS THE TEMPERATURE OF YOUR DRINKS.

**AKS-R30** 0.3L HOT COLD WHOLE WASHABLE

■ (PCR) Coral Pink 4971860034138  
■ (WY) Snow White 4971860034145  
■ (HSL) Slate Gray 4971860034121

\* Antimicrobial finish: Stopper, gasket

**AKS-R40** 0.4L HOT COLD WHOLE WASHABLE

■ (ASM) Smoky Blue 4971860034169  
■ (WY) Snow White 4971860034176  
■ (TD) Dark Brown 4971860034152

\* Antimicrobial finish: Stopper, gasket

**AKS-R50** 0.5L HOT COLD WHOLE WASHABLE

■ (TD) Dark Brown 4971860034183

\* Antimicrobial finish: Stopper, gasket



Ergonomic comfort-grip handle for easy carrying.

Wide mouth design makes it easy to fill and enjoy your drinks.

Easy to clean.

Smooth round sip area that enhances drinking experience.

\* Limited stock.

STAINLESS STEEL BOTTLE



SCREW TYPE

LIGHTWEIGHT WATER BOTTLE CONVENIENT TO CARRY WITH YOU FOR ANY OCCASIONS.

**AKY-40** 0.4L

■ (R) Red 4971860035500  
■ (ADS) Dusty Blue 4971860035517  
■ (BD) Matte Black 4971860035494

**AKY-60** 0.6L

■ (R) Red 4971860035746  
■ (ADS) Dusty Blue 4971860035753  
■ (BD) Matte Black 4971860035739

**AKY-80** 0.8L

■ (MC) Matte Clear 4971860035524  
■ (BD) Matte Black 4971860035760

Smooth round sip area that enhances drinking experience.

Lightweight and travel-friendly.

Easy to open lid with re-designed stopper.

\* Antimicrobial finish: Stopper, gasket

Product	Tumbler Bottle			AKY-40	AKY-60	AKY-80
Model No.	AKS-R30	AKS-R40	AKS-R50	AKY-40	AKY-60	AKY-80
Capacity (L)	0.3	0.4	0.5	0.4	0.6	0.8
Hot Retention (6 hrs)	60°C/140°F	67°C/152°F	69°C/156°F	69°C/156°F	74°C/165°F	76°C/169°F
Hot Retention (1 hr)	84°C/183°F	86°C/186°F	87°C/188°F	87°C/188°F	88°C/190°F	89°C/192°F
Cold Retention (6 hrs)	12°C/53°F	11°C/51°F	10°C/50°F	11°C/51°F	10°C/50°F	8°C/46°F
Mouth Diameter (cm)	5.5	5.5	5.5	3.4	3.4	3.4
Product Size/ W x D x H (cm)	8.3×8.3×17.3	8.3×8.3×20.3	8.3×8.3×23.5	6.7×6.7×18.2	7.2×7.2×22.1	7.5×7.5×26.0
Product W.t. (kg)	0.26	0.29	0.33	0.21	0.25	0.3
Case Size/ W x D x H (cm)	8.9×8.9×18.1	8.9×8.9×21.5	8.9×8.9×24.5	7.2×7.2×19.0	7.7×7.7×22.8	8.0×8.0×26.9
Case W.t. (kg)	0.32	0.36	0.41	0.26	0.31	0.36
PCS / CTN	12	12	12	12	12	12



STAINLESS STEEL BOTTLE

SCREW TYPE

SIMPLE & MODERN PORTABLE WATER BOTTLE.  
CHOOSE FROM A VARIETY OF COLORS AND SIZES THAT FITS YOUR NEEDS.

NEW



AKZ-35 0.35L

■ (PD) Dusty Pink

□ (W) White

■ (HCH) Charcoal Gray

4971860035357

4971860035364

4971860035371

NEW



AKZ-48 0.48L

■ (ASM) SMOKY BLUE

□ (W) White

■ (HCH) Charcoal Gray

4971860035388

4971860035395

4971860035401

NEW



AKZ-60 0.6L

□ (W) White

■ (HCH) Charcoal Gray

4971860035418

4971860035425



HOT COLD  
WHOLE WASHABLE

SCREW TYPE

LIGHTWEIGHT AND EASY-TO-CLEAN WATER BOTTLE  
WITH NEW ANTIMICROBIAL TECHNOLOGY.



AKW-35 0.35L

■ (P) Rouge Pink

□ (W) Silky White

■ (A) Indigo Blue

4971860034626

4971860034602

4971860034619



AKW-48 0.48L

■ (P) Rouge Pink

□ (W) Silky White

■ (A) Indigo Blue

4971860034657

4971860034633

4971860034640



Smooth round sip area that enhances drinking experience.



Detachable stopper. Easy to clean.





\* Antimicrobial finish: Stopper, gasket

\* Limited stock.

Ag+  
SUS 316  
HOT COLD  
WHOLE WASHABLE  
DETACHABLE STOPPER

SCREW TYPE

CUTE MINI INSULATED BOTTLE THAT LETS YOU  
TAKE A SIP OF FRESH COFFEE ANYTIME & ANYWHERE.

NEW




AKB-21 0.2L

□ (W) Milky White


■ (T) Moach Brown

4971860035470

4971860035487



Smooth opening and closing with specially designed stopper.



Compact size. Slips perfectly into small handbags.

Product	Screw Type Stainless Steel Bottle					
Model No.	AKZ-35	AKZ-48	AKZ-60	AKW-35	AKW-48	AKB-21
Capacity (L)	0.35	0.48	0.6	0.35	0.48	0.2
Hot Retention (6 hrs)	68°C/154°F	73°C/163°F	75°C/166°F	68°C/154°F	73°C/163°F	61°C/142°F
Hot Retention (1 hr)	87°C/188°F	88°C/190°F	88°C/190°F	87°C/188°F	88°C/190°F	85°C/185°F
Cold Retention (6 hrs)	10°C/50°F	9°C/48°F	9°C/48°F	10°C/50°F	9°C/48°F	11°C/52°F
Mouth Diameter (cm)	4	4	4	3.4	3.4	3.5
Product Size/ W x D x H (cm)	6.8×6.8×19.1	6.8×6.8×23.2	7.2×7.2×24.8	6.6×6.6×17.6	6.6×6.6×22.1	5.7×5.7×13.6
Product W.t. (kg)	0.2	0.24	0.28	0.2	0.23	0.115
Case Size/ W x D x H (cm)	7.5×7.5×20.2	7.5×7.5×24.2	7.9×7.9×26.2	6.9×6.9×18.3	6.9×6.9×22.9	6.4×6.4×14.7
Case W.t. (kg)	0.26	0.3	0.34	0.25	0.29	0.16
PCS / CTN	12	12	12	12	12	12

STAINLESS STEEL BOTTLE

ONE TOUCH TYPE

SIMPLE ONE-TOUCH FLIP-TOP BOTTLE WITH LEAKPROOF RING LOCK DESIGN.



AKT-35 0.35L

■ (PD) Dusty Pink

□ (W) White

■ (HCH) Charcoal Gray

4971860035173

4971860035166

4971860035180



AKT-50 0.5L

■ (ASM) Smoky Blue

□ (W) White

■ (HCH) Charcoal Gray

4971860035203

4971860035197

4971860035210



AKT-60 0.6L

□ (W) White

■ (HCH) Charcoal Gray

4971860035227

4971860035234

HOT COLD  
ONE TOUCH OPEN  
WHOLE WASHABLE

ONE TOUCH TYPE

STANDARD ONE-TOUCH BOTTLE SERIES WITH SLIDING  
SAFETY LOCK. SUITABLE FOR SPORTS DRINKS.



AKM-40 0.4L

■ (H) Fresh Gray

■ (AK) Dark Navy

4971860033858

4971860033834



AKM-55 0.55L

■ (H) Fresh Gray

■ (AK) Dark Navy

4971860033889

4971860033865



AKM-70 0.7L

■ (H) Fresh Gray

■ (AK) Dark Navy

4971860033919

4971860033896

SUS 316  
HOT COLD  
WHOLE WASHABLE  
DETACHABLE STOPPER

STRAW TYPE

CONVENIENT WATER BOTTLE GREAT FOR ANY OCCASION.  
PERFECT FOR ONE-HANDED HYDRATION ON THE GO.



APA-40 0.4L

■ (P) Pink

■ (T) Brown

4971860033308

4971860033292



Push to open lid for faster hydration.



Accessory parts are few and simple making it easy to clean.

\* Limited stock.

Product	One Touch Type Stainless Steel Bottle						Straw Type
Model No.	AKT-35	AKT-50	AKT-60	AKM-40	AKM-55	AKM-70	APA-40
Capacity (L)	0.35	0.5	0.6	0.4	0.55	0.7	0.4
Hot Retention (6 hrs)	61°C/142°F	68°C/154°F	69°C/156°F	59°C/138°F	65°C/149°F	68°C/154°F	—
Hot Retention (1 hr)	85°C/185°F	86°C/186°F	87°C/188°F	85°C/185°F	86°C/186°F	87°C/188°F	—
Cold Retention (6 hrs)	10°C/50°F	9°C/48°F	9°C/48°F	10°C/50°F	9°C/48°F	9°C/48°F	11°C/51°F
Mouth Diameter (cm)	3.8	3.8	3.8	4.4	4.4	4.4	4.4
Product Size/ W x D x H (cm)	6.4×7.2×18.2	6.4×7.2×23.7	6.9×7.2×24.1	6.6×7.6×18.7	6.6×7.6×23.9	7.3×7.7×25.3	6.6×7.1×19.0
Product W.t. (kg)	0.2	0.24	0.26	0.2	0.22	0.27	0.21
Case Size/ W x D x H (cm)	6.8×6.8×19.1	6.8×6.8×24.6	7.2×7.2×25.0	7.3×7.3×19.7	7.3×7.3×24.7	7.9×7.9×26.2	7.2×7.2×20.0
Case W.t. (kg)	0.25	0.31	0.33	0.26	0.29	0.34	0.26
PCS / CTN	12	12	12	12	12	12	12

PEACOCK COMPANY HISTORY  
GLASS POT  
STAINLESS STEEL POT, OTHERS  
STAINLESS STEEL MUG, TUMBLER  
ICE PACK  
HOME / ZAKAYA SERIES  
GAMING TUMBLER BOTTLE  
STAINLESS STEEL BOTTLE  
FOOD JAR LUNCH JAR  
KEEPER  
GLASS POT (MADE TO ORDER)

STAINLESS STEEL BOTTLE (SPORTS • OUTDOOR)



DIRECT DRINKING TYPE

Ag+ SUS 316 COLD ONLY CARBONATED BEVERAGE WHOLE WASHABLE

INSULATED VACUUM BOTTLE KEEPS DRINKS FRESH, COLD & CARBONATED.

NEW



NEW



AJH-60 0.6L

■ (AC) Cyan Blue 4971860036125  
■ (B) Black 4971860036132

AJH-80 0.8L

■ (HL) Light gray 4971860036149  
■ (B) Black 4971860036156

\* Antimicrobial finish: cap, spout, gasket



Specially designed structure that allows pressure to be released from the gasket to keep drinks carbonated.



Spout lid enables easy one-handed drinking with better sealing performance.

SCREW MUG TYPE

SUS 316 HOT COLD WHOLE WASHABLE

TRAVEL-FRIENDLY BOTTLE WITH SECURE EASY-TO GRIP CARRY HANDLE.



AKR-60 0.6L

■ (R) Red 4971860034053  
■ (GE) Emerald Green 4971860034060

AKR-80 0.8L

■ (A) Blue 4971860034046  
■ (BD) Matt Black 4971860034039



With easy-to grip carry handle.



Suitable for various outdoor scenes.

Product	Direct Drinking Type Stainless Steel Bottle		Screw Mug Type Stainless Steel Bottle	
Model No.	AJH-60	AJH-80	AKR-60	AKR-80
Capacity (L)	0.6	0.8	0.6	0.8
Hot Retention (6 hrs)	-	-	70°C/158°F	74°C/165°F
Hot Retention (1 hr)	-	-	88°C/190°F	89°C/192°F
Cold Retention (6 hrs)	8°C/46°F	7°C/44°F	9°C/48°F	8°C/46°F
Mouth Diameter (cm)	3.4	3.4	4.4	4.4
Product Size/ W x D x H (cm)	7.5×7.5×23.7	8.1×8.1×26.7	7.5×7.5×23.0	7.7×7.7×27.1
Product W.t. (kg)	0.29	0.39	0.28	0.33
Case Size/ W x D x H (cm)	7.8×7.8×24.8	8.5×8.5×27.8	7.9×7.9×23.8	8.1×8.1×28.1
Case W.t. (kg)	0.36	0.47	0.35	0.41
PCS / CTN	12	12	12	12

STAINLESS STEEL BOTTLE (SPORTS • OUTDOOR)

SCREW MUG TYPE

SUS 316 HOT COLD WHOLE WASHABLE

LARGE CAPACITY SPORTS BOTTLE WITH WATER RESISTANT STRAP IDEAL FOR OUTDOOR USE.

NEW



AKD-RS101 1.0L

■ (MC) Matte Clear 4971860036170  
■ (BD) Matte Black 4971860036163  
● With strap and anti-shock bottom cover



AKD-RS100 1.0L

■ (GM) Mint Green 4971860032622  
■ (RSG) Signal Red 4971860032639  
■ (B) All Black 4971860032646

● With strap and anti-shock bottom cover

★ Limited stock.



With anti-shock silicone bottom cover.



Enjoy your ice water with ice block drinking cap.

SCREW MUG TYPE

SUS 316 HOT COLD WHOLE WASHABLE

HIGH QUALITY BOTTLE WITH LEATHER STRAP.



AMP-80★ 0.8L

■ (XA) Stainless 4971860030178

★ Limited stock.

AMP-100★ 1.0L

■ (XA) Stainless 4971860030185

★ Limited stock.



Enjoy your ice water with ice block drinking cap.



Easy to hold with grip cover.

Screw Mug Type Stainless Steel Bottle

Product	AKD-RS101		AKD RS100	
Model No.	AKD-RS101	AKD RS100	AMP-80	AMP-100
Capacity (L)	1.0	1.0	0.8	1.0
Hot Retention (6 hrs)	78°C/172°F	78°C/172°F	71°C/159°F	74°C/165°F
Hot Retention (1 hr)	90°C/194°F	90°C/194°F	88°C/190°F	88°C/190°F
Cold Retention (6 hrs)	8°C/46°F	8°C/46°F	9°C/48°F	9°C/48°F
Mouth Diameter (cm)	4.7	4.7	5.6	5.6
Product Size/ W x D x H (cm)	8.7×8.4×27.7 ※1	8.7×8.4×27.7 ※1	9.0 x 8.3 x22.5	9.0 x 8.3 x27.2
Product W.t. (kg)	0.51 ※2	0.51 ※2	0.42	0.48
Case Size/ W x D x H (cm)	10.0×8.7×28.7	10.0×8.7×28.7	9.0 x 9.0 x 23.8	9.0 x 9.0 x 28.1
Case W.t. (kg)	0.6	0.6	0.5	0.56
PCS / CTN	12	12	12	12

※1 Without strap. ※2 With strap.



ONE TOUCH TYPE

PORTABLE SPORTS BOTTLE WITH SPOUT LID FOR CONVENIENT ONE-HANDED DRINKING.



AKE-R60



■ (BY) Black Yellow 4971860033438  
■ (ASM) Smoky Blue 4971860033445



AKE-R80



■ (BY) Black Yellow 4971860033452  
■ (MC) Smoky Blue 4971860033469



ONE TOUCH DIRECT DRINKING TYPE

LARGE CAPACITY WIDE MOUTH BOTTLE. AN ALLY FOR YOUR WORKOUT AND SPORTS HYDRATION.



AJG-R150



■ (BY) Black Yellow 4971860033384



AJG-R200



■ (BY) Black Yellow 4971860033391



Open the bottle with one touch. Ring-lock design—safe to carry around without leaking.



Soft handle material for easy carrying. Anti-shock silicone bottom cover to protect your bottle.



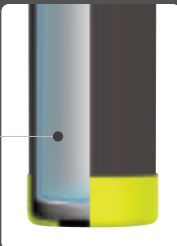
FOR SPORTS DRINKS



INNER BOTTLE MADE OF CORROSION-RESISTANT STAINLESS STEEL

SUS316

※ SUS316 contains 16% chromium, 10% nickel and 2% molybdenum, 18% chromium and 8% nickel. The molybdenum is added in SUS316 to help resist corrosion to chlorides. Although SUS304 is widely used and is a good corrosion resistant material, SUS316 is better. Peacock uses only SUS304 and SUS316 stainless steel to make sure your vacuum bottle achieves its best performance.



ONE TOUCH DIRECT DRINKING TYPE

LARGE CAPACITY & PORTABLE BOTTLE FOR YOUR DAILY SPORTS & FITNESS NEEDS.



NEW



AJK-R150



■ (H) Thunder Gray 4971860036187

NEW



AJK-R200



■ (BGR) Graphite Black 4971860036194

● With Shoulder Strap



Adjustable shoulder strap enables two ways of carrying. Carry on your shoulders. Must bring for travel and the gym.



Hand-held carry. Strap is made with soft material for easy carrying.

Product	One Touch Mug Type		One Touch Direct Drinking Type			
Model No.	AKE-R60	AKE-R80	AJG-R150	AJG-R200	AJK-R150	AJK-R200
Capacity (L)	0.6	0.8	1.5	2.0	1.5	2.0
Hot Retention (6 hrs)	69°C/156°F	72°C/162°F	—	—	—	—
Hot Retention (1 hr)	87°C/188°F	88°C/190°F	—	—	—	—
Cold Retention (6 hrs)	9°C/48°F	9°C/48°F	9°C/48°F	8°C/46°F	9°C/48°F	8°C/46°F
Mouth Diameter (cm)	3.8	3.8	6.9	6.9	6.9	6.9
Product Size/ W x D x H (cm)	7.2×7.4×24.3	8.0×8.0×26.0	11.2×12.2×25.8	12.2×13.5×28.4	11.2×12.2×25.8	12.2×13.5×28.4
Product W.t. (kg)	0.3	0.35	0.65	0.75	0.68	0.78
Case Size/ W x D x H (cm)	7.5×7.5×25.0	8.3×8.3×26.7	11.8×11.7×26.9	13.1×12.8×29.3	11.8×11.7×26.9	13.1×12.8×29.3
Case W.t. (kg)	0.36	0.42	0.77	0.9	0.8	0.93
PCS / CTN	12	12	12	12	12	12



STAINLESS STEEL BOTTLE (KIDS TODDLER)

2-WAY TYPE (CUP & STRAW) BOTTLE SET

TWO-WAY DESIGNED BOTTLE FOR TODDLERS AND KIDS!  
SUPPORTS THEIR GROWTH AND INDEPENDENCE.



With Cup  
With Name Space  
With Cup  
With Name Space

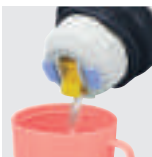
**ASK-W40**

■ (CRD) Coral Dot 4971860033728  
■ (AKD) Navy Dot 4971860033711

● With shoulder belt

CUP TYPE 0.36L  
WITH INNER STOPPER

HOT COLD  
DETACHABLE STOPPER  
WITH CUP  
WHOLE WASHABLE



Serving cup enhances kid's skills to pour water on their own.

STRAW TYPE 0.4L  
WITH STOPPER UNIT

COLD ONLY  
ONE TOUCH OPEN  
WHOLE WASHABLE



Straw type lets your kid drink slowly and allows tilt-free sipping.

2-WAY TYPE (CUP & DIRECT DRINK)

NEW TRAVEL-FRIENDLY KIDS WATER BOTTLE.  
HYDRATION FOR YOUR LITTLE ONES MADE EASY.



With Cup  
With Name Space  
With Cup  
With Name Space

CUP TYPE 0.45L  
WITH INNER STOPPER

HOT COLD  
DETACHABLE STOPPER  
WITH CUP  
WHOLE WASHABLE



Serving cup enhances kid's skills to pour water on their own.

DIRECT DRINK TYPE WITH STOPPER UNIT 0.49L

COLD ONLY  
ONE TOUCH OPEN  
WHOLE WASHABLE



Built-in spout type lets your kid drink directly from the bottle easily.

ASN-W50

■ (Y) Yellow 4971860036262  
■ (H) Gray 4971860036255


● With shoulder strap

Product	2 Way Type (Cup & Straw)	2 Way Type (Cup & Direct Drink)
Model No.	ASK-W40	ASN-W50
Capacity (L)	0.36 (With inner stopper) 0.4 (With stopper unit)	0.45 (With inner stopper) 0.49 (With stopper unit)
Hot Retention (6 hrs)	Above 68°C (With inner stopper)	Above 71°C (With inner stopper)
Cold Retention (6 hrs)	10°C/50°F	10°C/50°F
Mouth Diameter (cm)	4.2	4.2
Product Size/ W x D x H (cm)	11.7×8.6×15.3 (With inner stopper) 11.7×8.6×16.5 (With stopper unit)	11.7×8.6×17.6 (With inner stopper) 11.7×8.6×18.7 (With stopper unit)
Product W.t. (kg)	0.3 (With inner stopper) 0.31 (With stopper unit)	0.32 (With inner stopper) 0.31 (With stopper unit)
Case Size/ W x D x H (cm)	10.3×10.0×23.2	10.3×10.0×24.6
Case W.t. (kg)	0.47	0.91
PCS / CTN	12	12

STAINLESS STEEL BOTTLE (SCHOOL CHILDREN)

2-WAY TYPE (CUP & DIRECT TYPE)

TWO WAY TYPE DESIGN! POUR USING THE CUP OR DRINK DIRECTLY.



With cup  
Write down name here  
With cup  
Write down name here

Shoulder Strap

Without Pouch

**ASG-W81**

■ (AVH) Purple Heart 4971860033056  
■ (AKS) Navy Star 4971860033063

CUP TYPE WITH INNER STOPPER 0.75L

HOT COLD  
DETACHABLE STOPPER  
CUP TYPE  
WHOLE WASHABLE

Press the yellow spout to dispense water into the cup.

DIRECT DRINKING TYPE WITH STOPPER UNIT 0.8L

COLD ONLY  
ONE TOUCH OPEN  
WHOLE WASHABLE

Protective push-to-open lid keeps spout clean. Leak-proof with safety lock.

ONE TOUCH DIRECT DRINKING TYPE

EASY-TO-CARRY INSULATED BOTTLE WITH HANDY POUCH.  
PERFECT FOR YOUR ACTIVE KIDS.



Without Pouch

NEW

NEW

NEW

AJC-F82 0.8L

■ (AVS) Purple Star 4971860036217  
■ (B) Black 4971860036200



4.5cm diameter wide mouth bottle. Lets you pour large ice cubes into the bottle easily.

AJC-F102 1.0L

■ (PS) Pink Star 4971860036231  
■ (B) Black 4971860036224



Protective bottom pouch is made from anti-shock EVA material.

AJC-F152 1.5L

■ (B) Black 4971860036248



Product	2 WAY TYPE (CUP & DIRECT DRINKING)	One Touch Direct Drinking Type		
Model No.	ASG-W81	AJC-F82	AJC-F102	AJC-F152
Capacity (L)	0.75 (With inner stopper) 0.8 (With stopper unit)	0.8	1.0	1.5
Hot Retention (6 hrs)	76°C/168°F (With inner stopper)	—	—	—
Cold Retention (6 hrs)	8°C/46°F	9°C/48°F	8°C/46°F	7°C/45°F
Mouth Diameter (cm)	4.2	4.5	4.5	4.5
Product Size/ W x D x H (cm)	8.7×10.3×22.1 ※1 (With inner stopper) 8.7×9.1×23.3 ※1 (With stopper unit)	8.4×8.6×23.8 ※1	8.4×8.6×27.7 ※1	9.5×9.5×32.7 ※1
Product W.t. (kg)	0.45 ※2 (With inner stopper) 0.44 ※2 (With stopper unit)	0.42 ※2	0.48 ※2	0.64 ※2
Case Size/ W x D x H (cm)	10.7×10.6×30.4	9.9×9.9×24.8	9.9×9.9×28.8	10.9×10.9×33.8
Case W.t. (kg)	0.61	0.5	0.58	0.76
PCS / CTN	12	12	12	12

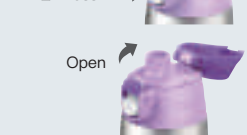
One Touch Open

(ASN/ASG/AJC)

1. Slide to unlock

2. Press

Open



※1 Without Pouch.

※2 With Pouch.



STAINLESS STEEL BOTTLE (SCHOOL CHILDREN)

SCHOOL BOTTLE

CHILD-FRIENDLY BOTTLE FOR A NEW START AT ELEMENTARY SCHOOL.



AJE-F80 0.8L

■ (A) Blue 4971860035104

AJE-F100 1.0L

■ (A) Blue 4971860035111

Without Pouch



AJF-F80 0.8L

■ (AV) Purple 4971860035128

AJF-F100 1.0L

■ (AV) Purple 4971860035135

Without Pouch



Bottle : Dishwasher safe.



6.7 cm diameter wide mouth bottle. Easy to clean thoroughly.



Reflective strap with shoulder pad that enhances visibility and provides additional safety.



Name card holder on the pouch.

ONE TOUCH TYPE



STYLISH WATER BOTTLE FOR TEENS. STAY HYDRATED WHETHER AT SCHOOL OR FIELD TRIP.



AMI-F50 0.5L

■ (AV) Purple 4971860034749

■ (B) Black 4971860034756

Without Pouch



With pouch to protect your bottle.



Easy to carry with strap.



Product	School Bottle				One Touch Mug Type
Model No.	AJE-F80	AJE-F100	AJF-F80	AJF-F100	AMI-F50
Capacity (L)	0.8	1.0	0.8	1.0	0.5
Hot Retention (6 hrs)	—	—	—	—	66°C/150°F
Hot Retention (1 hr)	—	—	—	—	87°C/188°F
Cold Retention (6 hrs)	10°C/50°F	9°C/48°F	10°C/50°F	9°C/48°F	9°C/48°F
Mouth Diameter (cm)	6.7	6.7	6.7	6.7	4.4
Product Size/ W x D x H (cm)	8.7×9.8×21.2 ※1	8.7×9.8×25.2 ※1	8.7×9.7×21.2 ※1	8.7×9.7×25.2 ※1	6.4×7.5×23.6 ※1
Product W.t. (kg)	0.48 ※2	0.55 ※2	0.48 ※2	0.55 ※2	0.29 ※2
Case Size/ W x D x H (cm)	10.8×10.8×22.8	10.8×10.8×26.8	10.8×10.8×22.8	10.8×10.8×26.8	7.2×7.3×24.7
Case W.t. (kg)	0.55	0.63	0.55	0.63	0.35
PCS / CTN	12	12	12	12	12

※1 Without Pouch. ※2 With Pouch.

STAINLESS STEEL BOTTLE



CUP TYPE



SLIM AND LIGHTWEIGHT INSULATED BOTTLE WITH A BUILT-IN SERVING CUP.



ASH-35 0.35L

■ (XA) Stainless 4971860032103

ASH-50 0.5L

■ (XA) Stainless 4971860032110

CUP TYPE



CARRY CONVENIENTLY WITH AN ADJUSTABLE STRAP.



ASJ-81 0.76L

■ (XA) Stainless 4971860031656

● With adjustable strap

ASJ-101 0.97L

■ (XA) Stainless 4971860031663

● With adjustable strap

CUP TYPE



LARGE CAPACITY TYPE WITH CARRYING HANDLE. HOLDS ENOUGH DRINKS FOR THE WHOLE GROUP TO GET A CUP.



ART-151 1.45L

■ (XA) Stainless 4971860032400

● With adjustable strap



AXT-2001 1.96L

■ (XA) Stainless 4971860032417

● With adjustable strap



Easy to carry with pull up type soft handle.



Removable inner accessories, easy to clean.



7 cm diameter wide mouth bottle. You can put large ice cubes inside.



Built-in plastic cup allows for easy drinking and sharing.

Product	Cup Type					
Model No.	ASH-35	ASH-50	ASJ-81	ASJ-101	ART-151	AXT-2001
Capacity (L)	0.35	0.5	0.76	0.97	1.45	1.96
Hot Retention (6 hrs)	69°C/156°F	74°C/165°F	76°C/168°F	79°C/174°F	79°C/174°F	81°C/177°F
Cold Retention (6 hrs)	9°C/48°F	9°C/48°F	8°C/46°F	8°C/46°F	8°C/46°F	7°C/44°F
Mouth Diameter (cm)	3.6	3.6	4.2	4.2	7.0	7.0
Product Size/ W x D x H (cm)	6.8×6.8×19.2	6.8×6.8×24.0	9.9×8.6×23.5	9.9×8.6×27.6	12.8×11.0×31.3	14.4×12.6×30.4
Product W.t. (kg)	0.26	0.3	0.49	0.56	1.01	1.11
Case Size/ W x D x H (cm)	7.4×7.4×20.5	7.4×7.4×25.0	9.1×9.1×24.4	9.1×9.1×28.7	12.8×11.7×31.7	13.7×12.7×31.8
Case W.t. (kg)	0.32	0.36	0.58	0.66	1.14	1.27
PCS / CTN	12	12	12	12	12	12

PEACOCK COMPANY HISTORY

GLASS POT

STAINLESS STEEL POT, OTHERS

STAINLESS STEEL MUG, TUMBLER

ICE PACK

HOME IZAKAYA SERIES

GAMING TUMBLER BOTTLE

STAINLESS STEEL BOTTLE

FOOD JAR LUNCH JAR

KEEPER

GLASS POT (MADE TO ORDER)





STAINLESS FOOD JAR

INSULATED FOOD JAR THAT KEEPS YOUR FOOD AT DELICIOUS TEMPERATURE.

**LKC-50**  
■ 〈K〉 Khaki 49718600328

0.5L HOT COLD WHOLE WASHABLE DETACHABLE LID

\* Limited stock.

**LKD-30**  
■ 〈CA〉 Sand Beige 4971860033827  
■ 〈Y〉 Citron Yellow 4971860033810

0.3L HOT COLD WHOLE WASHABLE DETACHABLE LID

\* Limited stock.

Inner bottle design—  
For easy serving and cleaning.

Detachable lid design!  
Easy to clean thoroughly.

Easy to clean with the  
detachable lid.

**SUS 316**  
INNER BOTTLE MADE OF  
CORROSION-RESISTANT  
STAINLESS STEEL

SUS316 contains 16% chromium, 10% nickel and 2% molybdenum while SUS304 contains 18% chromium and 8% nickel. The molybdenum is added in SUS316 to help resist corrosion to chlorides. Although SUS304 is widely used and is a good corrosion resistant material, SUS316 is much better.

Peacock uses only SUS304 and SUS316 stainless steel to make sure your vacuum bottle achieves its best performance.

Product	Stainless Food Jar	
Model No.	LKC-50	LKD-30
Capacity (L)	0.5	0.3
Hot Retention (6 hrs)	64°C/147°F	55°C/131°F
Hot Retention (1 hr)	85°C/185°F	83°C/181°F
Cold Retention (6 hrs)	10°C/50°F	12°C/53°F
Mouth Diameter (cm)	7.4	6.0
Product Size/ W x D x H (cm)	94 x 94 x 169	8.7 x 8.7 x 10.7
Product W.t. (kg)	0.35	0.24
Case Size/ W x D x H (cm)	102 x 102 x 181	9.0 x 9.0 x 11.8
Case W.t. (kg)	0.43	0.28
PCS / CTN	12	12



STAINLESS LUNCH JAR

3-IN-1 LUNCH JAR SET. LARGE ENOUGH TO FIT AN ENTIRE MEAL TO KEEP YOU SATISFIED.

GREAT SOLUTION FOR PACKING A WIDE VARIETY OF FOOD. STORES LARGE CAPACITY OF SOUP. (UP TO 0.47L)

**ARL-18**  
□ 〈MC〉 Matt Clear 4971860033278  
■ 〈BD〉 Matt Black 4971860033261

3 Cups of Rice

MICROWAVE OVEN SAFE  
JAR, SIDE DISH, SOUP CONTAINER (EXCEPT LID)

**ARL-F18**  
■ 〈B〉 Black 4971860033285

3 Cups of Rice

MICROWAVE OVEN SAFE  
JAR, SIDE DISH, SOUP CONTAINER (EXCEPT LID)

WITH LUNCH BAG

\* Limited stock.

**AWL-20**  
■ 〈AK〉 Navy 4971860032752

3 Cups of Rice

MICROWAVE OVEN SAFE  
JAR, SIDE DISH, SOUP CONTAINER (EXCEPT LID)

0.47L soup container for various ingredients.

Containers are easy to take out from the jar with the handle design.

Product	Stainless Lunch Jar		
Model No.	ARL-18	ARL-F18	AWL-20
Capacity (L)	JAR/0.6 SOUP/0.28 SIDE DISH/0.43	JAR/0.6 SOUP/0.28 SIDE DISH/0.43	JAR/0.6 SOUP/0.47 SIDE DISH/0.43
Hot Retention (6 hrs)	68°C/154°F	68°C/154°F	70°C/158°F
Product Size/ W x D x H (cm)	15.2 x 13.6 x 21.8	15.2 x 13.6 x 21.8 ※1	15.2 x 13.6 x 23.8
Product W.t. (kg)	0.97	1.12 ※2	1.0
Case Size/ W x D x H (cm)	15.2 x 13.9 x 22.6	16.7 x 16.7 x 24.1	15.2 x 13.9 x 24.6
Case W.t. (kg)	1.09	1.24	1.13
PCS / CTN	12	12	12

※1 Without lunch bag. ※2 With lunch bag.





KEEPER

PORTABLE WATER JUG, COOLER AND DISPENSER FOR THE WHOLE GROUP.  
IDEAL FOR CAMPING, PICNICS, AND SPORTING EVENTS.



**INC-60** 6.1L HOT COLD MADE IN JAPAN

■ (SL) Silver 4971860032165



**INC-80** 8.1L HOT COLD MADE IN JAPAN

■ (SL) Silver 4971860032172



**INC-100** 9.5L HOT COLD MADE IN JAPAN

■ (SL) Silver 4971860032189



- Aluminum inner tank
  - 2 Way tap
  - With foldable foot
- \* Limited stock.

DOUBLE-TAP KEEPER

DOUBLE-TAP DESIGN AND CUP HOLDER  
FOR FASTER HYDRATION.



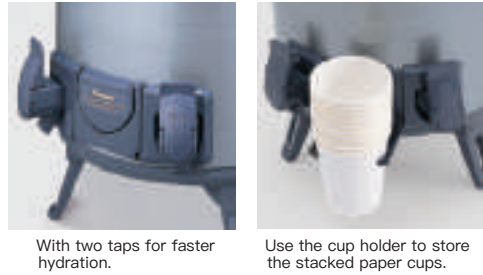
**INW-80** 8.1L HOT COLD MADE IN JAPAN

■ (AH) Silver 4971860030901



**INW-100** 9.5L HOT COLD MADE IN JAPAN

■ (AH) Silver 4971860030918



- Aluminum inner tank
  - 2 Way Tap
  - Cup holder
  - With foldable foot
- \* Limited stock.

Product	Keeper (with aluminum tank)				Double Tap Keeper (with aluminum tank)	
	INC-60	INC-80	INC-100		INW-80	INW-100
Model No.						
Capacity (L)	6.1	8.1	9.5		8.1	9.5
Hot Retention (6 hrs)	70°C/158°F	72°C/162°F	72°C/162°F		72°C/162°F	72°C/162°F
Cold Retention (6 hrs)	10°C/50°F	9°C/48°F	8°C/46°F		9°C/48°F	8°C/46°F
Mouth Diameter (cm)	14.8	14.8	14.8		14.8	14.8
Product Size/ W x D x H (cm)	24.5×27.6×27.5 ※	24.5×27.6×33.3 ※	24.5×27.6×36.4 ※		24.5×25.4×33.3 ※	24.5×25.4×36.4 ※
Product W.t. (kg)	1.4	1.6	1.7		1.66	1.78
Case Size/ W x D x H (cm)	25.0×25.0×28.4	25.0×25.0×33.9	25.0×25.0×37.5		27.0×25.0×34.1	27.0×25.0×37.7
Case W.t. (kg)	1.68	1.88	2.1		1.97	2.18
PCS / CTN	8	8	8		8	8

※ Product size measured with foot folded.

STAINLESS STEEL KEEPER

BUILT WITH ANTI-MICROBIAL TECHNOLOGY.  
ALSO SUITABLE FOR STORING SPORTS DRINKS OR  
ALKALINE IONIZED WATER.

**NEW**

Ag+



**INS-60K** 6.1L HOT COLD MADE IN JAPAN

■ (H) Grey 4971860034565

**NEW**

Ag+



**INS-80K** 8.1L HOT COLD MADE IN JAPAN

■ (H) Grey 4971860034572

**NEW**

Ag+



**INS-100K** 9.5L HOT COLD MADE IN JAPAN

■ (H) Grey 4971860034589



Made of stainless steel inner tank. Suitable for sports drinks or alkaline ionized water.

- Stainless steel inner tank
- 2-Way tap
- With foldable foot

DOUBLE TAP

LARGE CAPACITY WITH  
DOUBLE TAP TYPE.



**INS-W100** 9.5L HOT COLD MADE IN JAPAN

■ (H) Grey 4971860032424

- Stainless steel inner tank
- 2-Way tap
- With cup holder
- With foldable foot



2 taps available. Convenient to dispense water at the same time.



Use the cup holder to store the stacked paper cups.

STAINLESS STEEL KEEPER

LARGE CAPACITY TYPE FOR COMMERCIAL USE.  
HYDRATES THE ENTIRE TEAM AND BEATS SUMMER HEAT.



**IDS-120S** 12L HOT COLD MADE IN JAPAN

■ (XA) Stainless 4971860561788



**IDS-150S** 15L HOT COLD MADE IN JAPAN

■ (XA) Stainless 4971860562785



**IDS-W150** 15L HOT COLD MADE IN JAPAN

■ (XA) Stainless 4971860566783



BASE FOR IDS MODEL  
**ST-300**

■ (B) Black 4971860030161



Water level indicator on the wall of the tank to easily confirm the amount filled.



Dispense water by pressing the lever. You can also control the amount of water dispensed by controlling the pressing force.

Product	Stainless Steel Keeper			Double Tap Keeper	Stainless Steel Keeper ( Large Capacity)		
	INS-60K	INS-80K	INS-100K	INS-W100	IDS-120S	IDS-150S	IDS-W150
Model No.							
Capacity (L)	6.1	8.1	9.5	9.5	12.0	15.0	15.0
Hot Retention (6 hrs)	70°C/158°F	72°C/162°F	72°C/162°F	72°C/162°F	—	—	—
Cold Retention (6 hrs)	10°C/50°F	9°C/48°F	8°C/46°F	8°C/46°F	9°C/48°F	9°C/48°F	9°C/48°F
Mouth Diameter (cm)	14.8	14.8	14.8	14.8	23.7	23.7	23.7
Product Size/ W x D x H (cm)	25.0×28.8×27.5	25.0×28.8×33.3	25.0×28.8×36.4	25.0×28.8×36.4	31.5×33.0×40.4	31.5×33.0×47.1	31.5×33.0×47.1
Product W.t. (kg)	1.6	1.8	2.0	2.1	3.12	3.45	3.52
Case Size/ W x D x H (cm)	25.7×25.7×28.4	25.7×25.7×33.9	25.7×25.7×37.5	27.0×25.0×38.3	30.5×29.5×47.4	30.5×29.5×54.0	33.0×32.0×48.0
Case W.t. (kg)	1.9	2.1	2.3	2.5	3.6	4.0	4.0
PCS / CTN	8	6	6	6	4	4	4

GLASS POT (MADE TO ORDER)



HANDY POT

STYLISH HANDY POT WITH PLASTIC BODY.



**JP-100**  
1.0L HOT COLD MADE IN JAPAN



**CEP-10**  
1.0L HOT COLD MADE IN JAPAN

Product	Handy Pot	
Model No.	JP-100	CEP-10
Capacity (L)	1.0	1.0
Hot Retention (10 hrs)	68°C/154°F	68°C/154°F
PCS / CTN	12	24
Gross Weight (kg)	12.0	22.0
Measurement (cbm/carton)	0.080	0.124

GLASS POT (MADE TO ORDER)

HANDY POT

CIT SERIES WITH MULTIPLE DESIGN OPTIONS.



OTHER DESIGN OPTIONS FOR CIT MODEL:



CI MODEL: WITH STAINLESS STEEL PLATE



Product	Handy Pot							
Model No.	CIT-100	CIT-130	CIW-160	CIT-190	AIT-100	AIT-130	AIW-160	AIT-190
Capacity (L)	1.0	1.3	1.6	1.9	1.0	1.3	1.6	1.9
Hot Retention (10 hrs)	68°C/154°F	70°C/158°F	72°C/161°F	73°C/163°F	68°C/154°F	70°C/158°F	72°C/161°F	73°C/163°F
PCS / CTN	12	12	12	12	12	12	12	12
Gross Weight (kg)	12.0	13.0	15.0	17.0	12.0	14.0	16.0	17.0
Measurement (cbm/carton)	0.073	0.082	0.104	0.112	0.075	0.084	0.106	0.114

PEACOCK COMPANY HISTORY

GLASS POT

STAINLESS STEEL POT, OTHERS

STAINLESS STEEL MUG, TUMBLER

ICE PACK

HOME IZAKAYA SERIES

GAMING TUMBLER BOTTLE

STAINLESS STEEL BOTTLE

FOOD JAR LUNCH JAR

KEEPER

GLASS POT (MADE TO ORDER)



HANDY POT

STAINLESS STEEL CASING DESIGN.  
PARA DESIGN



SOCIAL DESIGN



CAP-1000SJ



CAP-1300SJ



CAP-1600SJ



CAP-1900SJ



Product	Handy Pot			
Model No.	CAP-1000SJ	CAP-1300SJ	CAP-1600SJ	CAP-1900SJ
Capacity (L)	1.0	1.3	1.6	1.9
Hot Retention (10 hrs)	68°C/154°F	70°C/158°F	72°C/161°F	73°C/163°F
PCS / CTN	12	12	12	12
Gross Weight (kg)	15.0	16.0	19.0	20.0
Measurement (cbm/carton)	0.083	0.090	0.114	0.124

AIR POT

NON-ELECTRIC WITH TWO DIFFERENT WATER DISPENSING MECHANISMS.  
PUSH & LEVER TYPE.



No.138-Blue

No.138-Brown

No.501 Brown

No.501 Black



FL-19/NHL Lever Type Air Pot is also available.

FP-19/NH (PUSH TYPE)



Product	Air Pot	
Model No.	FP-19/NH (PUSH TYPE)	FL-19/NHL (LEVER TYPE)
Capacity (L)	1.9	1.9
Hot Retention (10 hrs)	73°C/163°F	73°C/163°F
PCS / CTN	6	6
Gross Weight (kg)	12.0	12.0
Measurement (cbm/carton)	0.097	0.097

AIR POT

NON-ELECTRIC WITH TWO DIFFERENT WATER DISPENSING MECHANISMS.  
PUSH & LEVER TYPE.



No.138-Blue

No.138-Brown

Para



NLVIT-19 Lever Type Air Pot is also available.

NPHIT-19 (PUSH TYPE)



Product	Air Pot	
Model No.	NPHIT-19 (PUSH TYPE)	NLVIT-19 (LEVER TYPE)
Capacity (L)	1.9	1.9
Hot Retention (10 hrs)	73°C/163°F	73°C/163°F
PCS / CTN	6	6
Gross Weight (kg)	10.0	10.0
Measurement (cbm/carton)	0.078	0.078

AIR POT

STAINLESS STEEL CASING DESIGN.  
EASY TO DISPENSE WITH SIMPLE MECHANISM.



No.501 Brown

No.501 Black

No.501 Brown

No.501 Black

MPP-22S



MPP-30S



Easy to clean with detachable lid.

Product	Air Pot (Push Type)	
Model No.	MPP-22S	MPP-30S
Capacity (L)	2.2	3.0
Hot Retention (10 hrs)	76°C/169°F	78°C/172°F
PCS / CTN	6	6
Gross Weight (kg)	12.0	13.0
Measurement (cbm/carton)	0.098	0.105