

TO INSTALL THE GRIP COVER · BOTTOM COVER

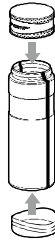
Install the grip cover

Ensure the grip cover is set properly on the groove of the bottle.

Install the bottom cover

Install the bottom cover on the bottom of the bottle. Make sure the bottle is sitting on the bottom cover securely. (AMJ-R, AMX TYPE)

Please make sure the covers and the bottle are dry before you install the grip cover or bottom cover.



HOW TO INSTALL THE GASKET

The bottle will leak if the gaskets are not properly installed.

Please read below content carefully to reinstall the stopper gasket and mouth gasket every time after removing the gaskets from the bottle.

Stopper gasket

Install the stopper gasket on the lid. Set the stopper gasket on the lid. (Please notice the direction of the gasket when installing.)



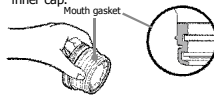
To remove mouth gasket

Use finger to pull off the mouth gasket gently.



To attach mouth gasket

Ensure the mouth gasket is set properly on the grooves of the inner cap.



※ The bottle will leak if the gaskets are not properly installed.

TO REMOVE RUST SPOTS AND WATER STAINS

You may find rust spots or water stains caused by the impurities in your drinking water. To remove these, fill the bottle with hot water and then add 10% vinegar in it. Put the bottle aside for about 3 hours. After that, wash the interior of the bottle thoroughly with a soft sponge.

※ To prevent the unpleasant odor, please clean the bottle thoroughly before and after use.

※ Please make sure you clean the bottle with a **soft** sponge to protect the surface of inner bottle from being scratched.

BEFORE CONTACT OUR SERVICE CENTER

Please check your bottle before you contact our service center. If what you encountered is not described below, please contact our service center.

SYMPTOM	CHECK POINT	WAYS TO HANDLE WITH
Water leaks from the lid	Make sure the stopper gasket is placed properly on the lid. Make sure the drinking cap set is placed properly on the bottle. Is there any dirt on the stopper gasket? Did you fill too much water in the bottle?	Please refer to the how to install the gasket section in this manual. Install the drinking cap properly. Please refer to the "how to clean section" in this manual. Please pour out some beverage from the bottle.
Bad odor from inner bottle or lid	Check if there is any beverage stain on the inner wall of the bottle or gaskets?	Please refer to the how to clean section in this manual to clean the bottle thoroughly. Use vinegar to clean the bottle if the dirt is hard to remove.
Bad hot (cold) retention	Make sure the beverage is hot (or cold) enough in the bottle.	Please pour proper amount of hot (or cold) beverages from the bottle.

ABOUT PARTS FOR AFTER SERVICE

We will keep the consumable parts mentioned in this manual for 5 years after we discontinued the production of this model. If you have any questions regarding to our products, please contact the store where you purchase the product or call our Peacock Customer Service Center.

CONSUMABLE PARTS

AMJ-R TYPE	Part	Quantity
	Stopper gasket	
	Lid set (Stopper, Stopper gasket)	
	Inner cap	
	Drinking cap (Inner cap, Mouth gasket)	
	Grip cover	
	Bottom cover	

AMP TYPE	Part	Quantity
	Stopper gasket	
	Lid set (Stopper, Stopper gasket)	
	Inner cap	
	Drinking cap (Inner cap, Mouth gasket)	
	Grip cover	
	Strap	

AMX TYPE	Part	Quantity
	Stopper gasket	
	Lid set (Stopper, Stopper gasket)	
	Inner cap	
	Drinking cap (Inner cap, Mouth gasket)	
	Grip cover	
	Bottom cover	
	Strap	



THE PEACOCK VACUUM BOTTLE CO., LTD

5-12-20, Sagisu, Fukushima-ku, Osaka, 553-0002, Japan

E-mail: service@the-peacock.co.jp

http://www.peacock-world.com/

1400701A

Peacock

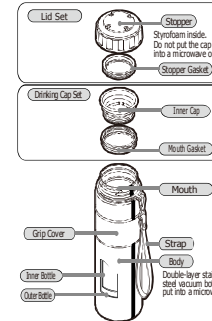
STAINLESS STEEL BOTTLE SPORTS MUG

AMP · AMX AMJ-R

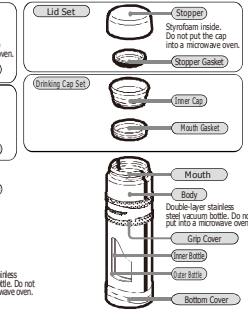
USER INSTRUCTION MANUAL

Thank you for purchasing our product. Before using this unit, please read the instruction carefully to ensure the best possible performance.

AMP·AMX TYPE



AMJ-R TYPE



Actual products may vary from the product illustrated.

Please store your instruction manual in a safe place for future reference.

SAFETY PRECAUTIONS

Do not use this product for any purpose other than keeping beverages warm or cold.

Keep out of reach of infants and small children.



There is a risk of scalding or injuries.

Be careful not to scald yourself when using the product.



Due to the vacuum insulation the surface of the product will not become hot, while beverages inside remain very hot.



Do not carry this product around in a tilted position.

Do not place near heat sources such as gas stoves, ovens and heaters.



It may cause deformation or discolor of the bottle.

Do not allow the hot kettles to touch the mouth of the bottle.



The bottle may tip over and cause injuries or damage to the bottle.

Avoid dropping, hitting or strong shock again the bottle.



It may damage the retention ability.

This product should not be filled with any of the following items:

- **Dry ice or beverages containing carbon dioxide**
The pressure inside the product will increase, causing the lid set hard to open or the beverage to spout out and possibly cause injuries.
- **Miso soup or other beverages containing salt**
The salt will stick to the sides of the inner bottle and cause rust.
- **Milk based beverages or fruit beverages**
Prolonged storage may spoil the beverages. This will increase the pressure inside the product and cause the beverage to spout out and possibly cause injuries.
- **Fruit pulp, tea or other kinds of leaves**
These may cause water leakage and possible malfunctions.
- **Please clean your bottle after use when filled with sports drinks.**
Rinse the inside of the mug as soon as possible after use to prevent rust or pinholes.
- **Do not left the beverages inside the mug for a long period of time.**

- **Do not remove the sticker on the bottom of the bottle.**
It may cause malfunction such as rusting or perforation.
- **Do not place the bottle on its side.**
- **The hot tea will discolor if stored in the bottle for a long period of time. Please use tea bags during your outdoor use.**
- **The lid will be difficult to open if hot beverage is stored in the bottle for a long period of time. Due to the pressure inside, there will be a "sound" when open the lid.**
- **Do not tilt the mug suddenly when drinking with hot beverages.**
The beverage may spill and cause scalding or stain clothes.
- **Do not shake the bottle after pouring hot beverage in the bottle.**
The pressure inside the bottle will increase and the stopper may become difficult to remove.
- **Do not force large ice cubes into the bottle.**
Forcing or hitting the ice cubes may cause deformation or malfunction of the bottle.
- **Attach the drinking cap set and the lid set properly to make sure the beverage do not leak.**
- **Please make sure the stopper gasket and mouth gasket are set properly before use.**
- **Do not hold the bottle by the lid set.**
- **Do not hold the mug by the bottom cover.**
The mug may drop and cause injuries.
- **Do not open the lid near face or when the mug is in a tilt position.**
The beverage may spill and cause scalding.
- **Please make sure the bottle is put upright when stored in a carrying bag to prevent the beverage from spilling.**
- **Do not take the product with computer, mobile, digital camera and other electronic gadgets.**
(Avoid water leakage and damage the gadgets.)
- **Do not use the product while driving.**
Attempting to use the bottle while driving may distract the driver and may lead to serious accidents.
- **When using with a car cup holder**
(1) Make sure the strength of the cup holder is sufficient to hold the mug. The mug may fall and cause injuries or stain the interior of the car or clothes.
(2) Do not use a hanging-type cup holder that attaches to the window or air vent. The cup holder may fall off.
- **Do not disassemble or attempt to repair this product by yourself.**
- **Do not heat in a microwave.**
It may cause sparks, deform or discolor.

INSTRUCTIONS

Please clean the inner bottle, drinking cap set, lid set thoroughly before use.

1 Remove the lid set and drinking cap set from the bottle

- Remove the lid set by turning the lid anti-clockwise.
- Detach the drinking cap set by turning the cap upwardly.



2 Fill the bottle with hot (cold) beverages

- ※ To increase the heat (or cold) retention, pour hot (or cold) water into the bottle and preheat (or precool) the bottle for about 1 minute.
- ※ Please refer to the right drawing for the maximum level of the beverages.

Approx. 1cm

The beverage may overflow if too much beverage is filled into the bottle.
Please pour out some beverage from the bottle if the beverage above the maximum level.



3 Close the lid set tightly

- Install the drinking cap set on the bottle.
- Turn the lid set clockwise to close the bottle.



4 Enjoy your beverage

- Remove the lid with the bottle stand upright.
- Tilt the bottle and enjoy your beverage with the drinking cap.

※ Tilt the product slowly when pouring hot beverages.
Due to the vacuum insulation, the outside of the bottle will not become hot. Please use with caution when drinking.)



5 Close the lid tightly after enjoying your beverage

- Put the bottle upright and then close the lid clockwise.



HOW TO TAKE CARE OF YOUR BOTTLE

- ◆ Please remember to clean your bottle after every use.
- ◆ Please use soft sponge only when clean your bottle.
- ◆ To prevent unpleasant odor, please clean your bottle thoroughly.

Outer bottle, lid set, drinking cap set

Please wash the outer bottle, lid set and drinking cap set with warm water and then wipe dry with dry cloth. ※ Please remove the lid set and drinking cap set before washing.

Inner bottle

Please use a soft sponge with handle to wash the inner bottle thoroughly.

Gasket

It may cause water leakage if there is a foreign object on the gasket. Remove the gaskets from the lid or drinking cap. Wash with warm water and then wipe the gaskets with dry cloth. After that, refer to the "How to install the gasket" section to reinstall the gaskets correctly.

Grip cover, bottom cover

Remove the grip cover and bottom cover. Clean the covers thoroughly then wipe the covers with dry cloth. After that, reinstall the covers correctly.

WHEN CLEANING YOUR BOTTLE Please read this manual thoroughly before clean your bottle.

- Do not use chlorine type bleach.
- Do not clean with thinner, benzene, abrasive cleaners or other harsh cleaners.
- Do not boil the bottle, lid set to sanitize or clean them with dish washer or dish dryer.
- It is ok to wash the bottle with water but do not soak in water for an extended period of time.
- Wipe moisture off thoroughly after clean to prevent water stains or rusting.
- Make sure to clean the beverage stains on the bottle thoroughly. Wipe the bottle with a dry cloth and allow all the parts to air dry before storage.